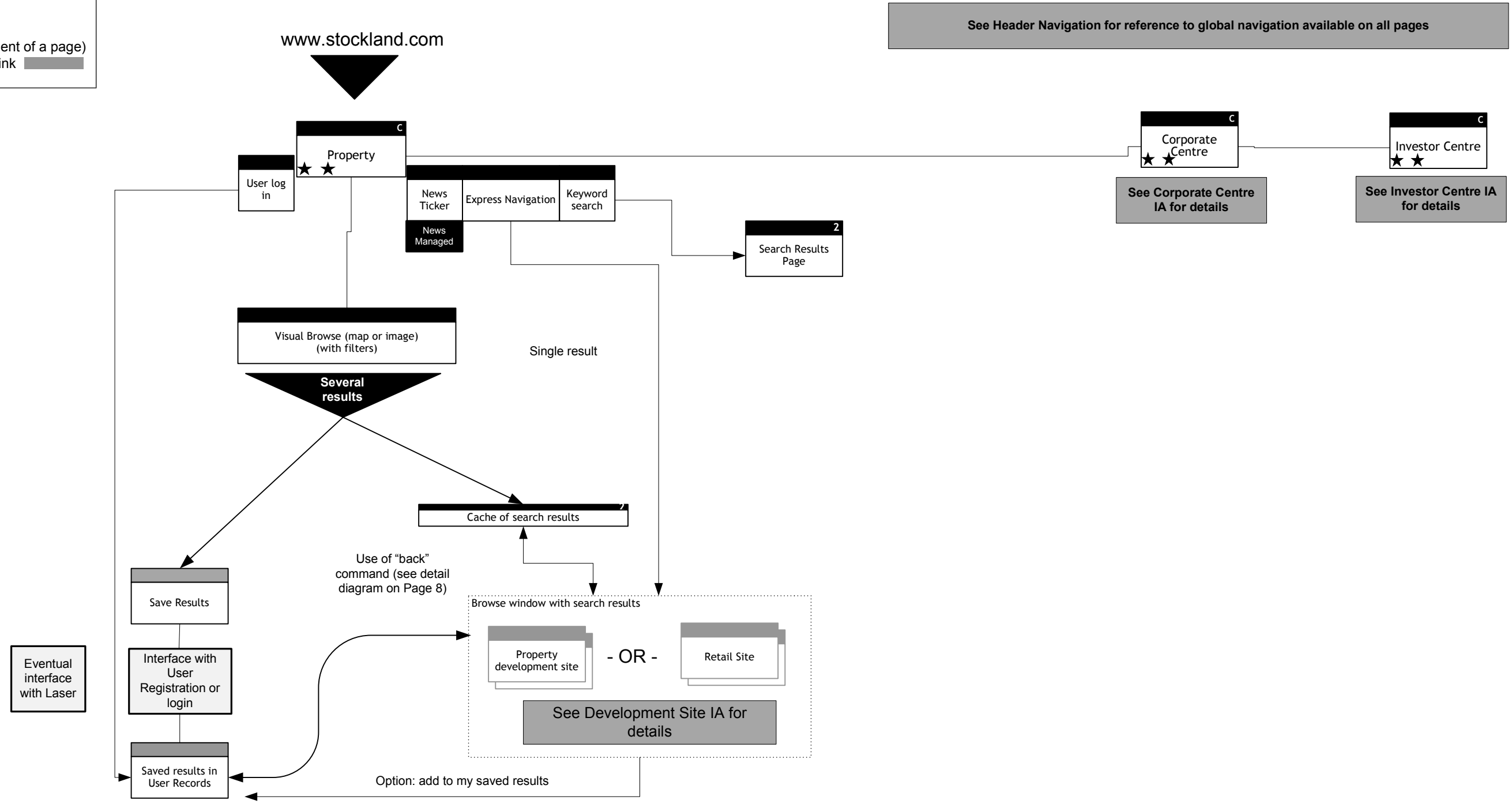


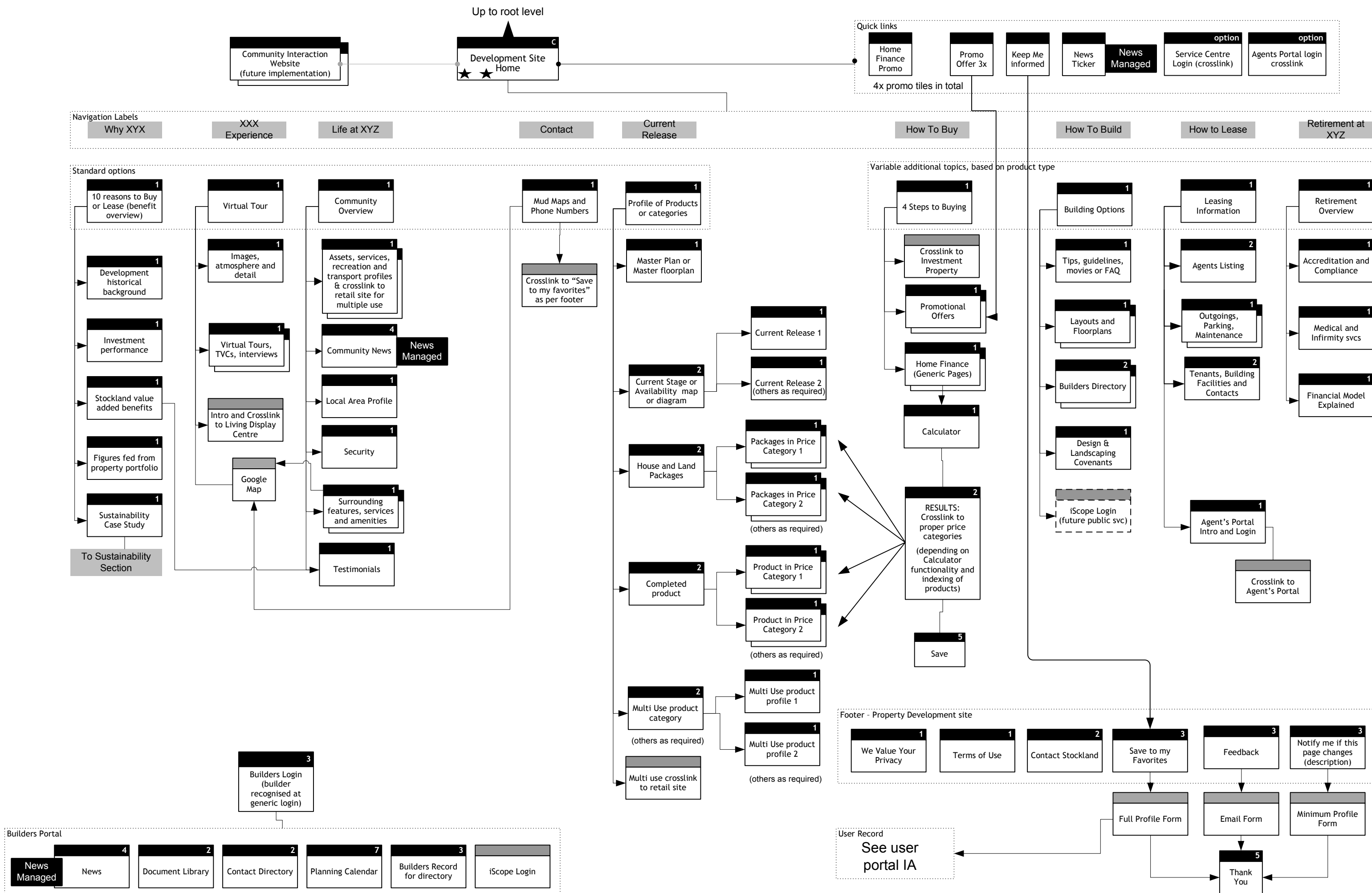


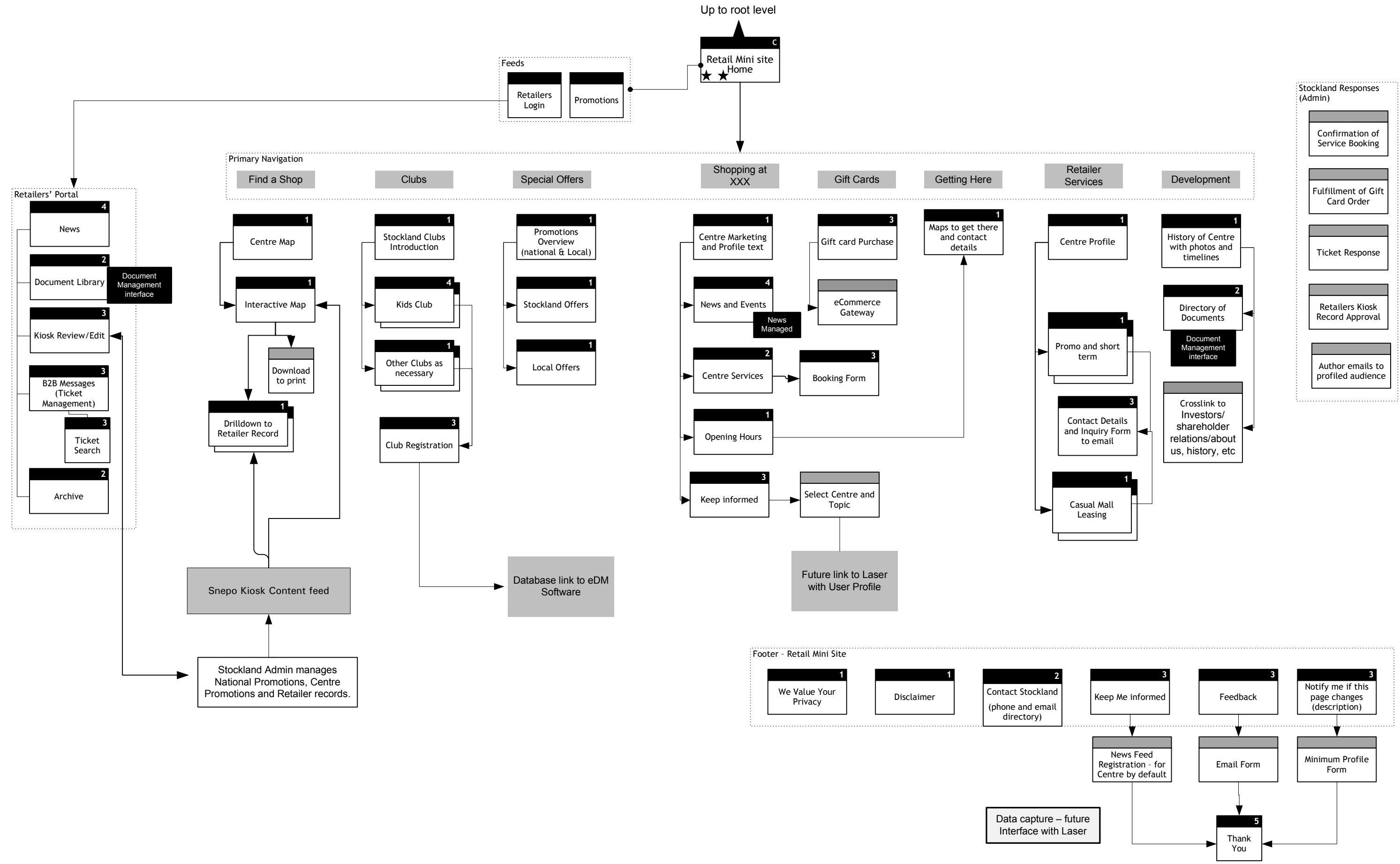
- Legend:**
- 1 – Article
  - 2 – Directory
  - 3 – Form
  - 4 – News
  - 5 – Admin
  - 6 – Integration
  - 7 – Calendar
  - C – Custom Page  
(no number is element of a page)
  - Non page or crosslink

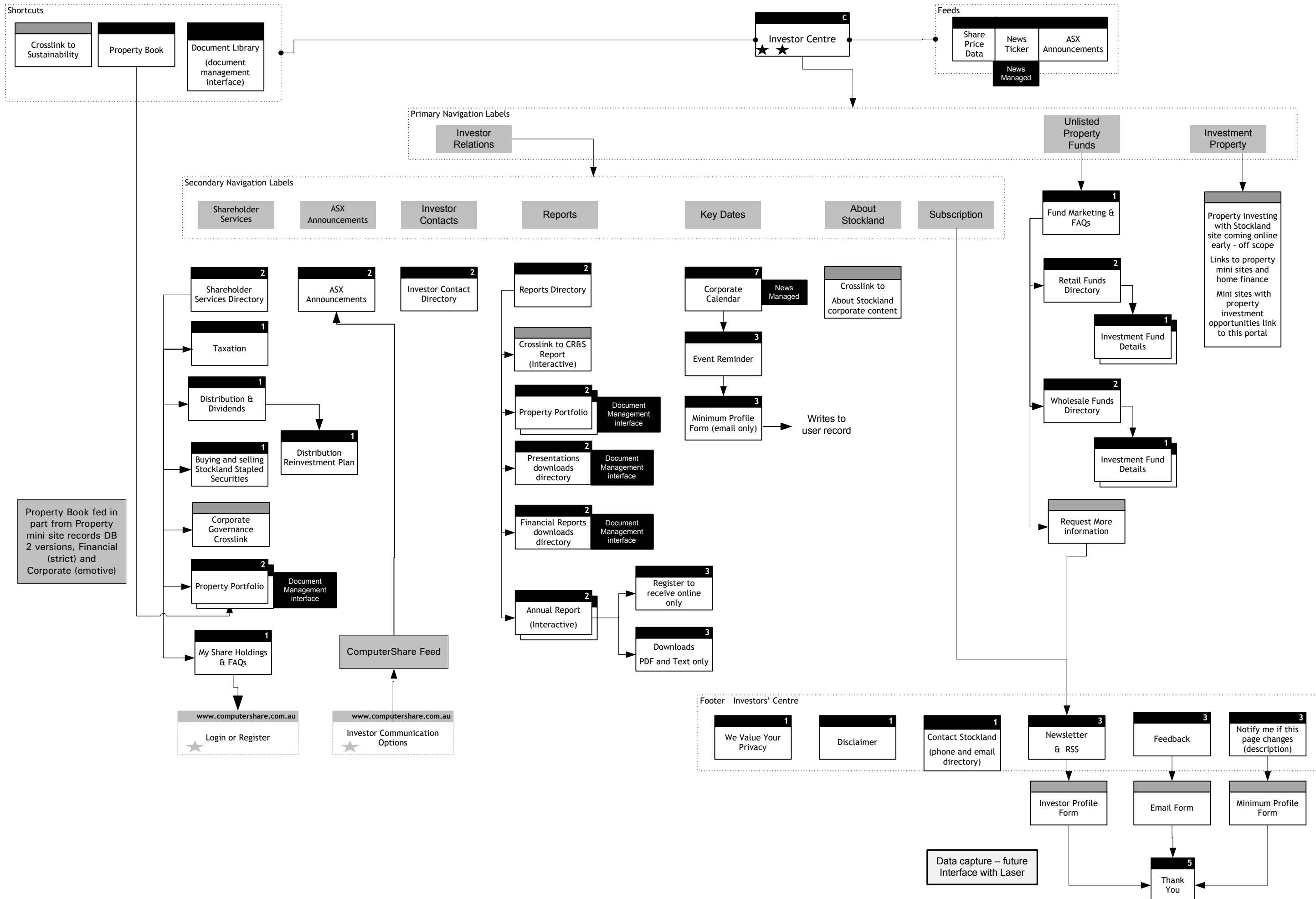


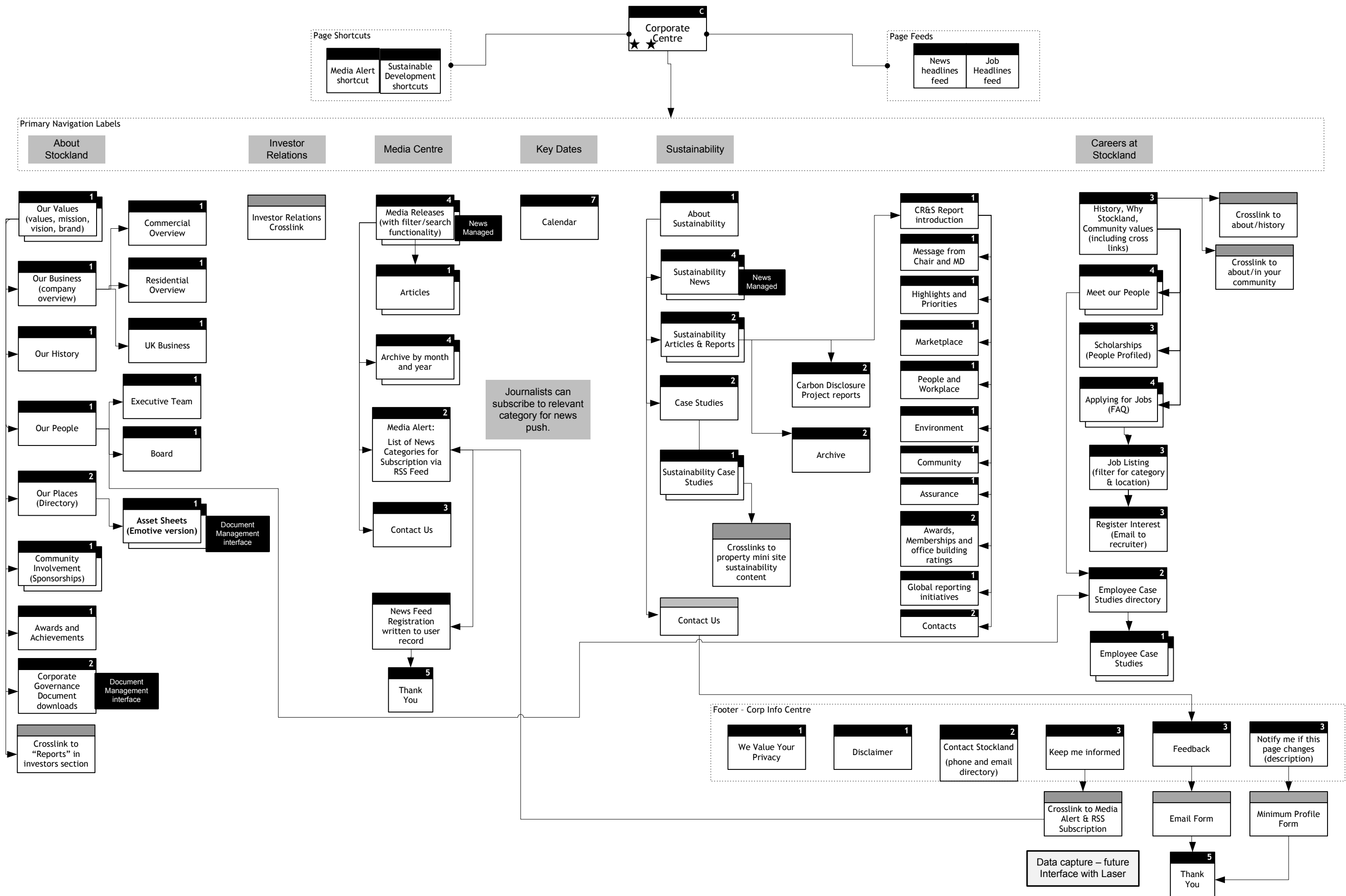
See Header Navigation for reference to global navigation available on all pages

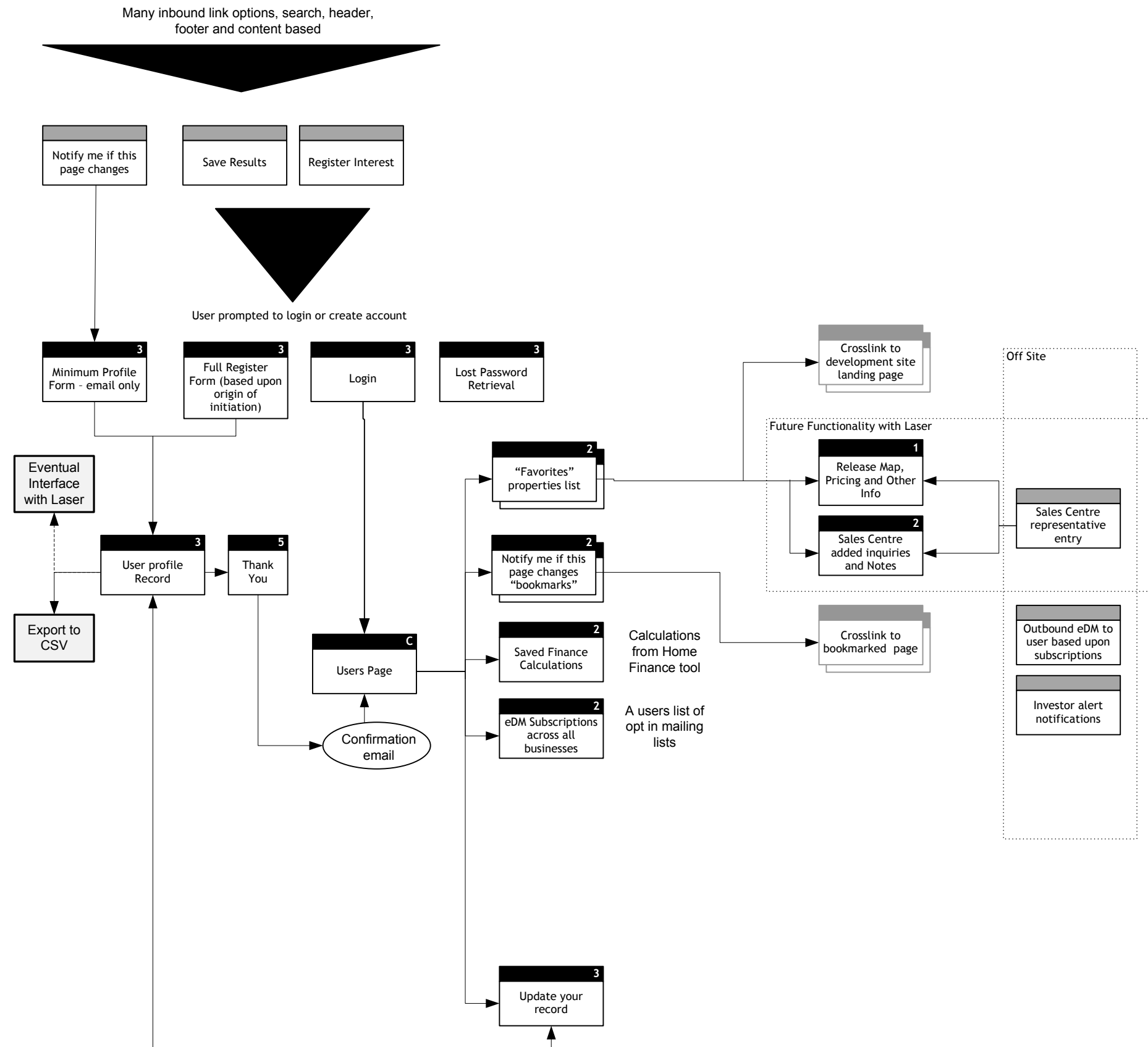
See each architecture for semi-universal version of Footer Navigation





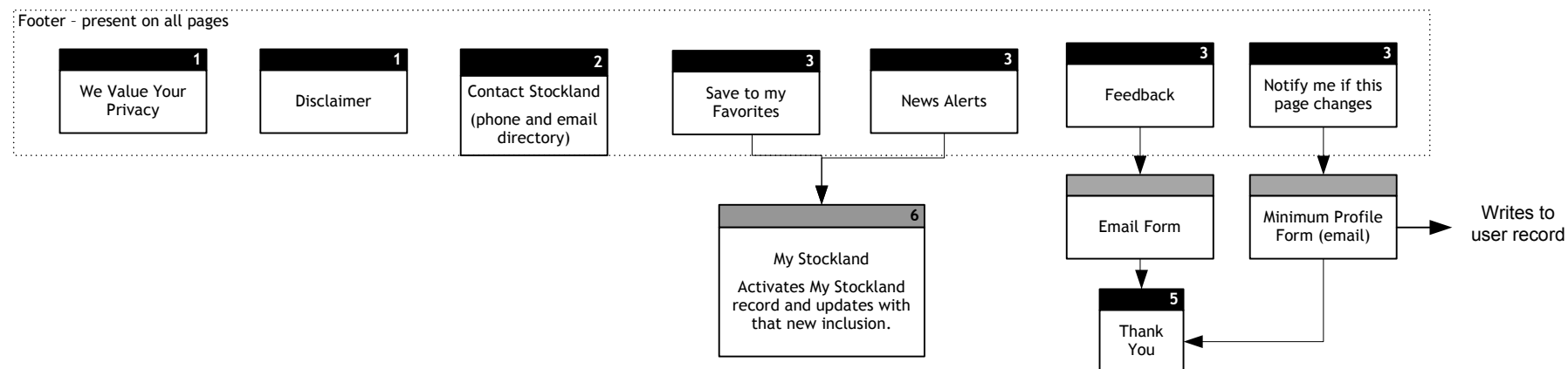
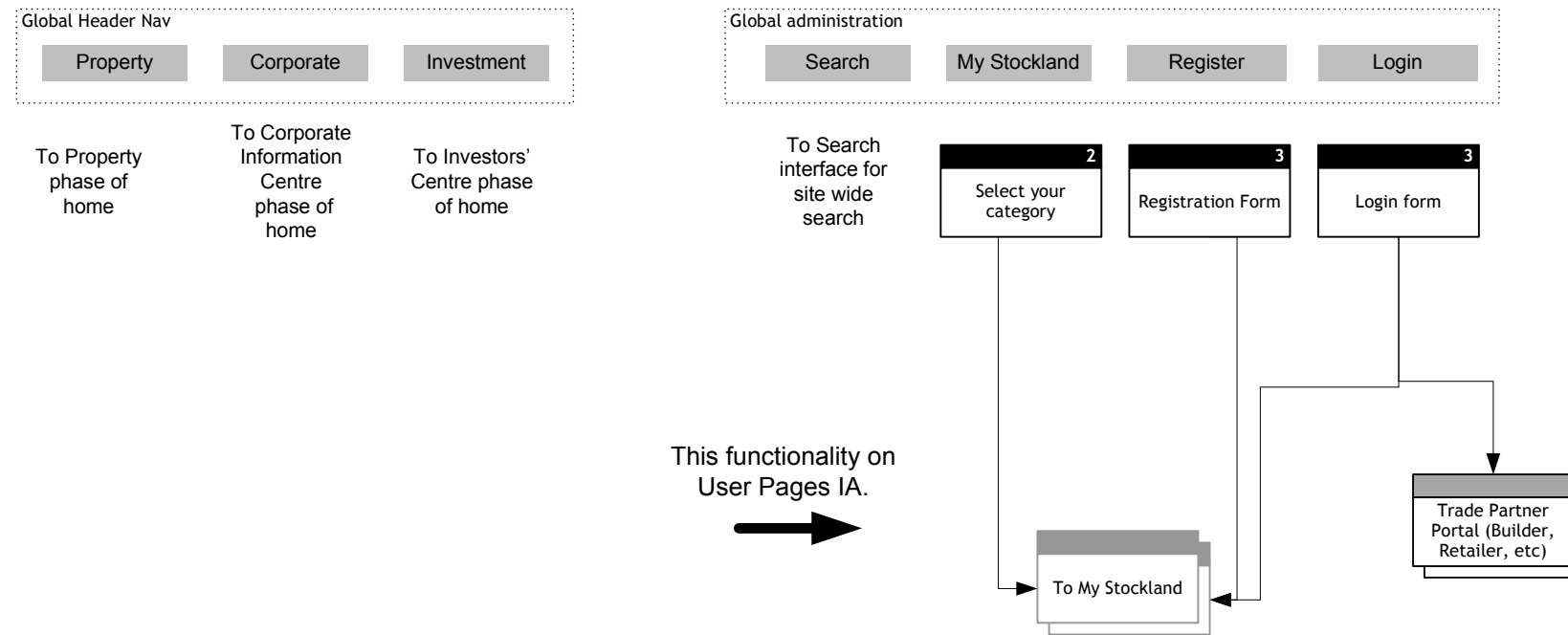


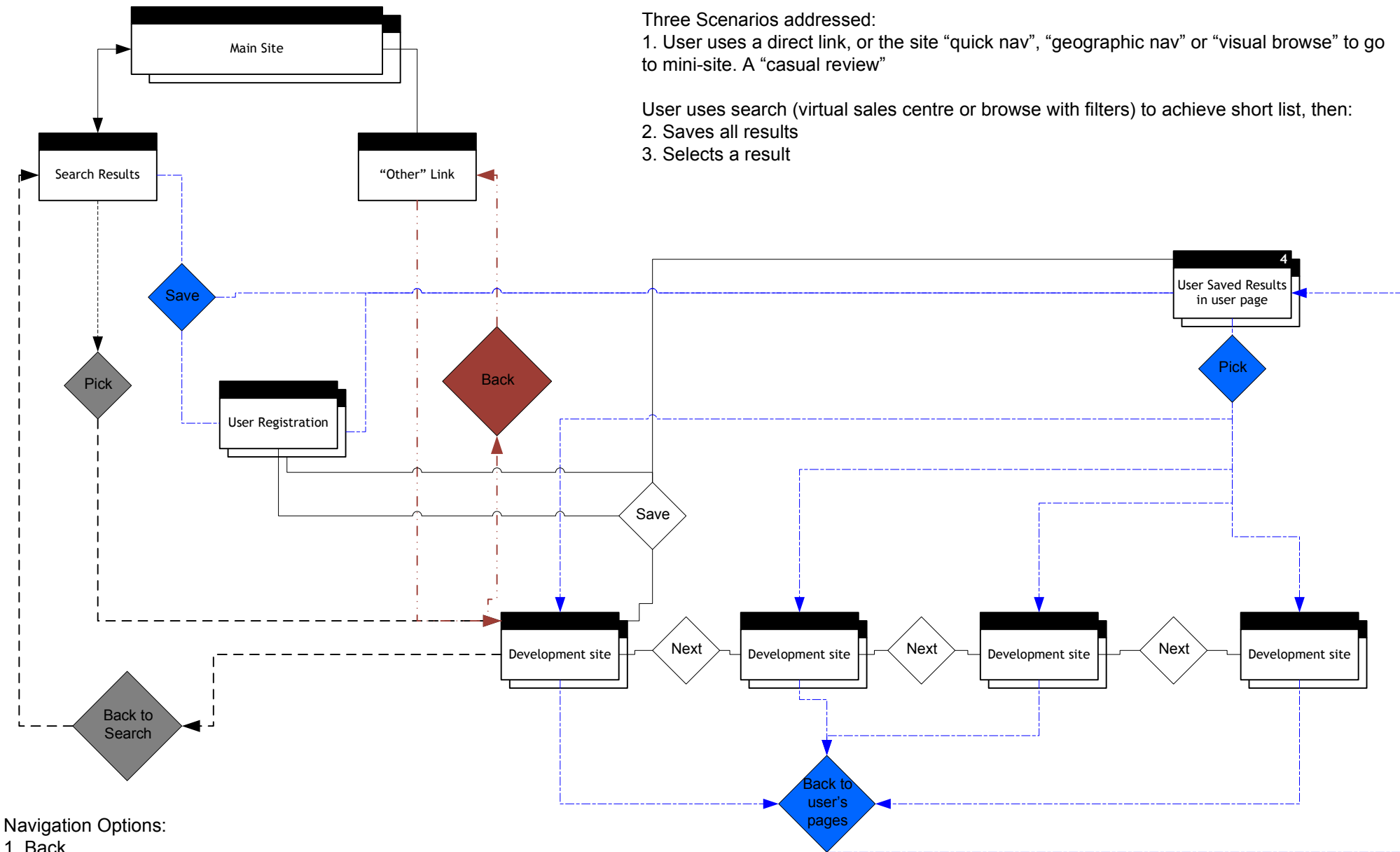






These navigation options are global, common to all pages. The header has a single structure, the footer has a second version for property that includes a save to favorites option.





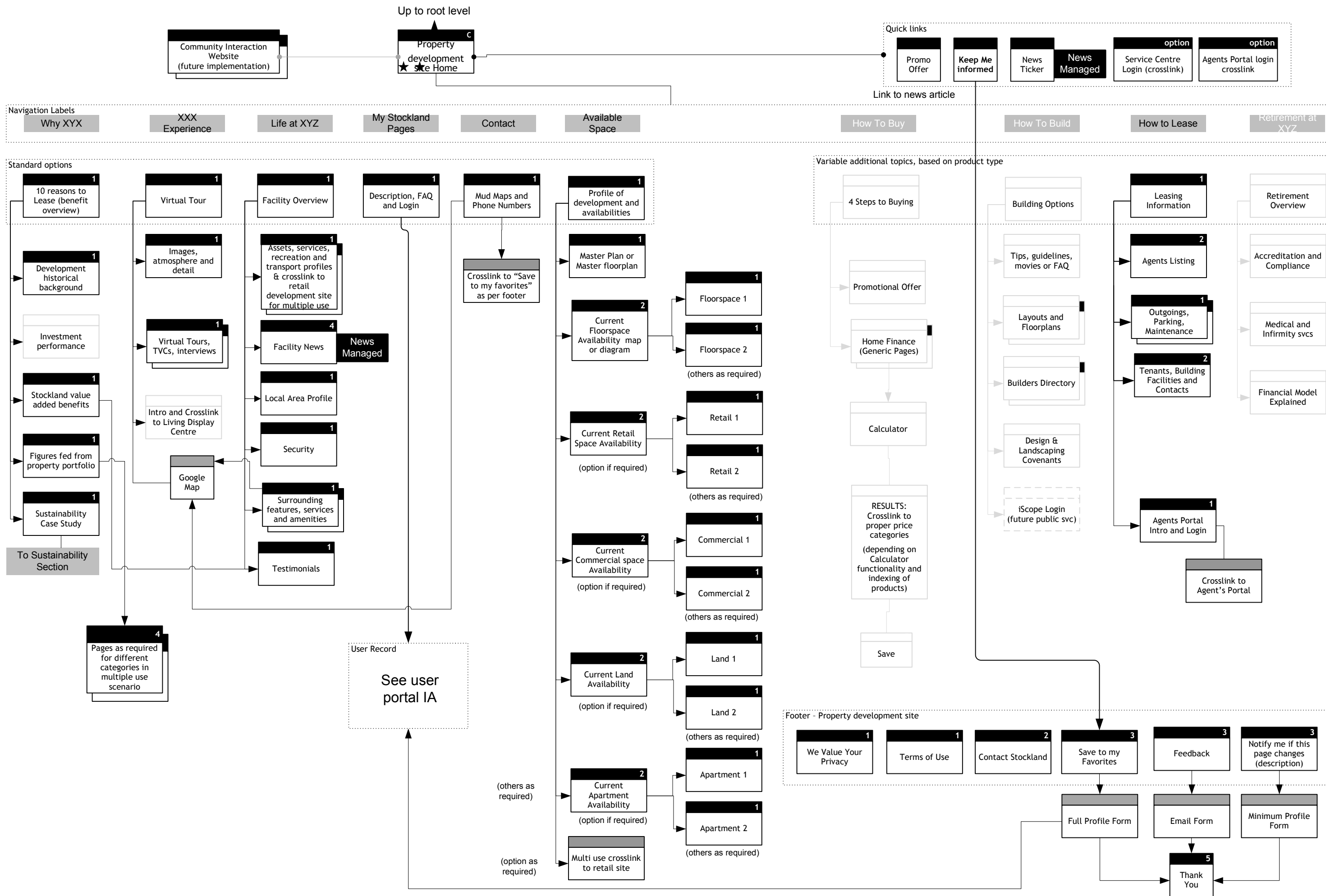
Three Scenarios addressed:  
 1. User uses a direct link, or the site "quick nav", "geographic nav" or "visual browse" to go to mini-site. A "casual review"  
 User uses search (virtual sales centre or browse with filters) to achieve short list, then:  
 2. Saves all results  
 3. Selects a result

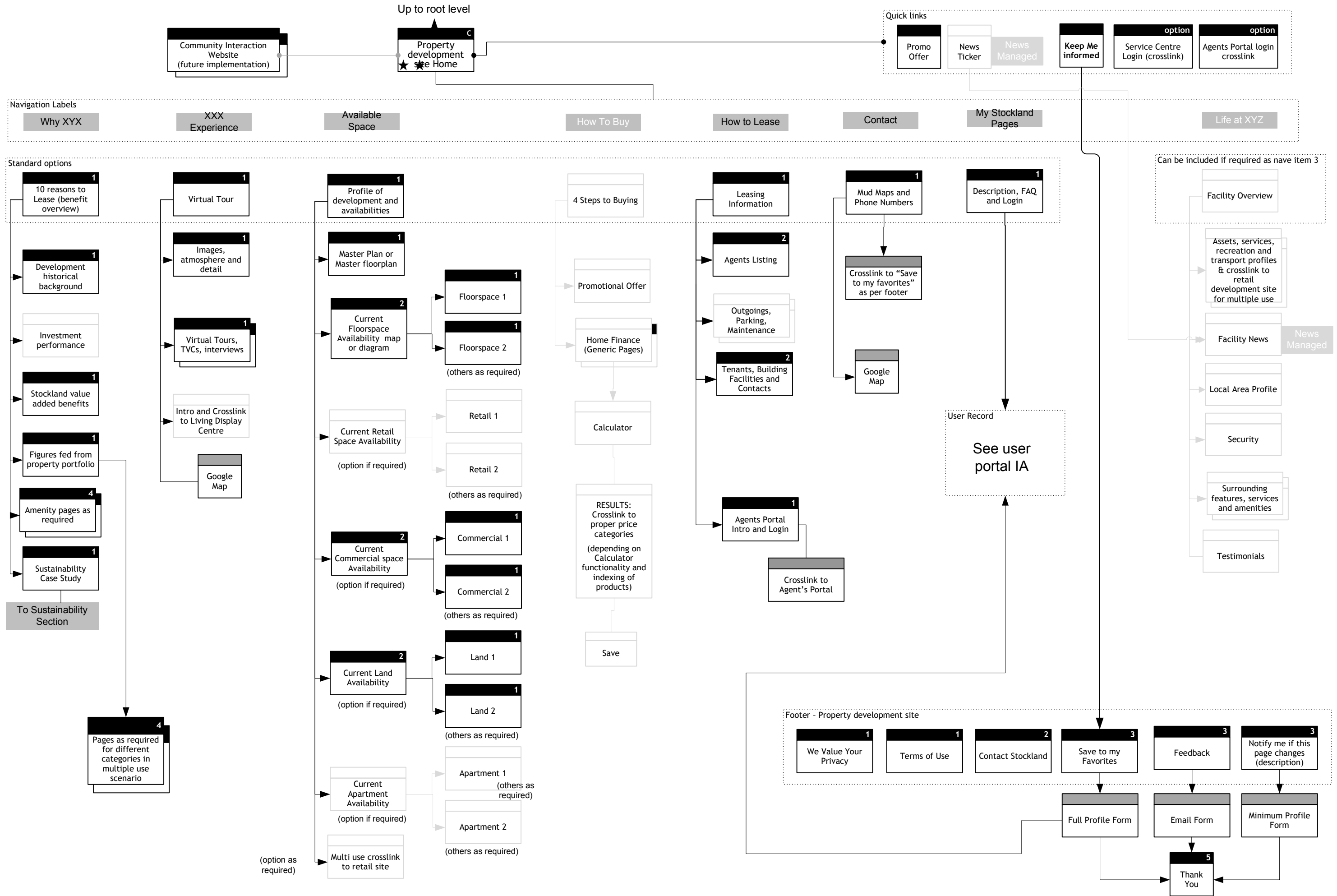
- Navigation Options:
1. Back
  2. Back to "User's" Pages
  3. Back to Search
- Save Results  
 Next Result

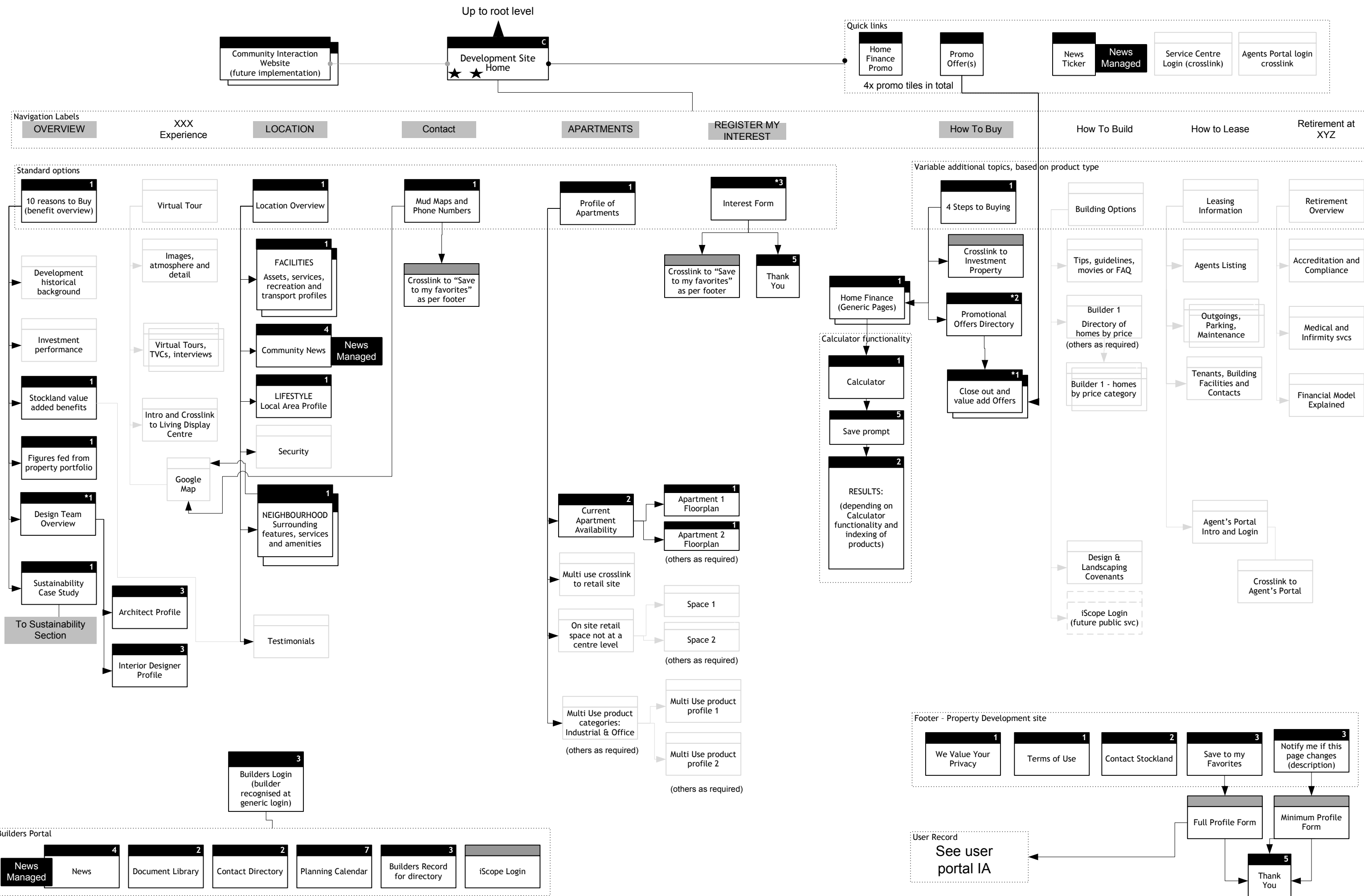




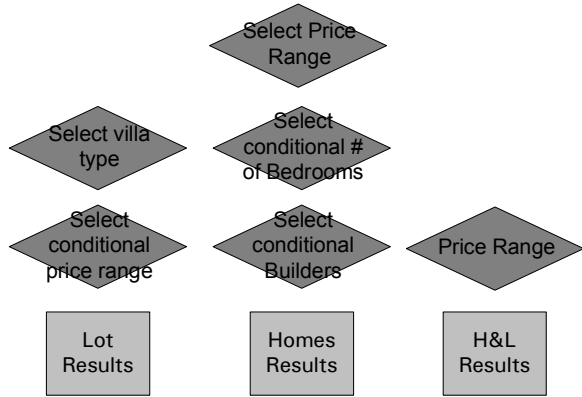
Based on a property development site, this is how one could be built to for commercial/industrial, or a multiple use site. The gray elements are components that most likely won't be required, but could be included nevertheless.







Search Path from



Property/Space Choices

